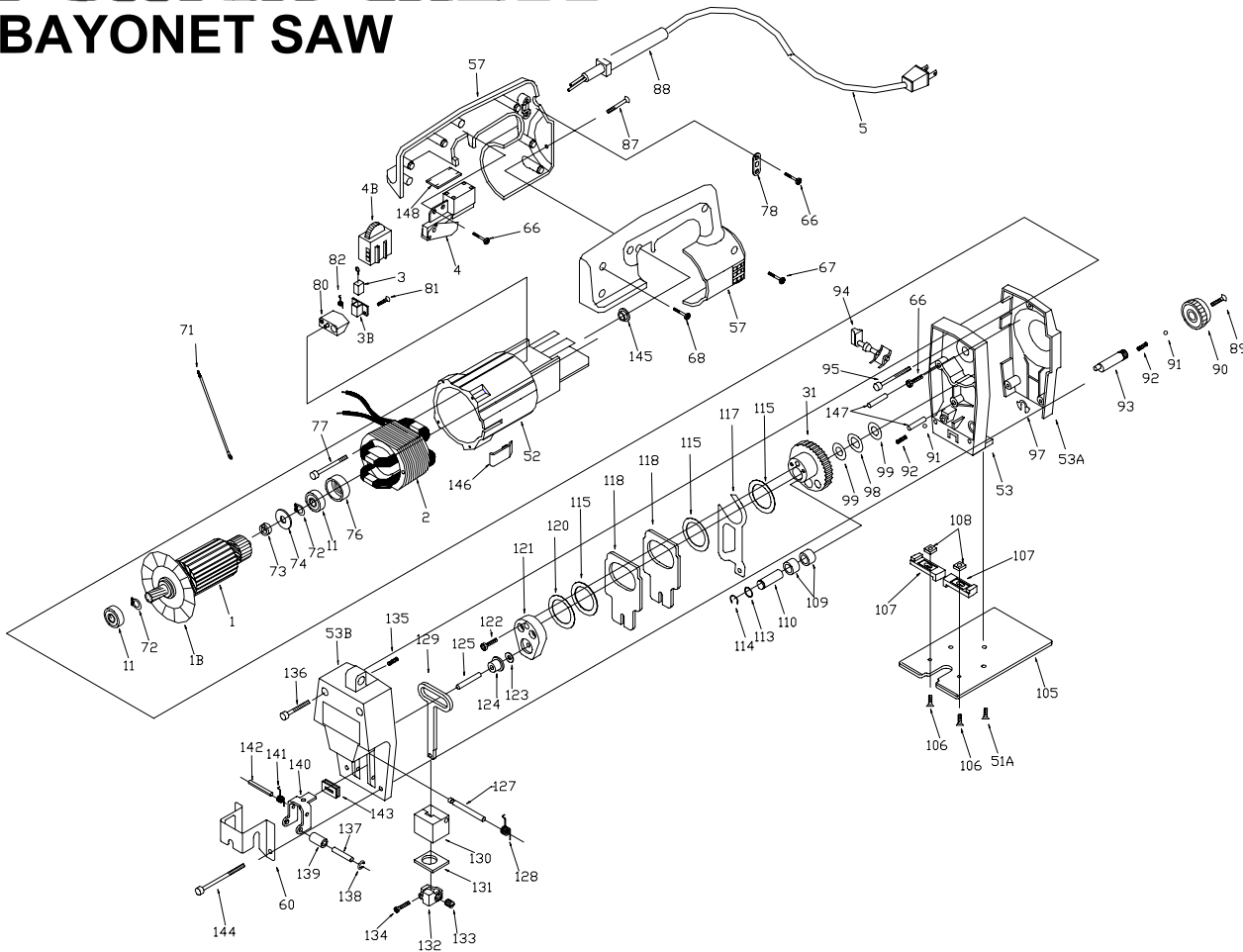


PORTER-CABLE

BAYONET SAW

WARNING: Electrical repairs should only be attempted by trained repairmen. Contact the nearest Porter-Cable Service Center or other competent repair center.

7549



Ref.	No.	Part No.	Description
	1	875066	Armature, Incl: 1B
	1B	811292	Fan
	2	891212	Field, Incl: Ref. 3
	3	888386	Brush, T3
		690741	Brush, T1, T2
	3B	690742	Brush Holder, T1 & T2 Only
	4	695920	Switch, Incl.: Ref. 148
	4B	693971	Speed Control
	5	872258	Cord
	11	855216	Bearing
	31	874930	Gear
	51A	845619	Screw
	52	888001	Motor Hsg. Incl.: Ref. 3, 71, & 8
	53	884068	Gear Hsg. Assy., T2, T3 Incl: Ref. 110, 147
		875067	Gear Hsg. Assy., T1, Incl: Ref. 110, 147
	53A	872817	Intermediate Housing
	53B	884053	Front Housing, T2, T3
		873401	Front Housing, T1
	57	694022**	Handle Set
	60	873403	Chip Deflector
	66	882185	Screw
	67	859384	Handle Screw, 5 req'd.
	68	694015	Front Handle Screw, 1 req'd.
	71	887666	Lead
	72	802203	Snap-Ring
	73	695894	Spacer
	74	695893	Spacer
	76	694432	Bearing Mount
	77	695185	Screw
	78	861434	Cord Clamp
	80	690740	Brush Holder Base
	81	879298	Screw - Plastite, T3
		854805	Screw 4-40 X .625, T1, T2
	82	868775	Brush Spring

Ref.	No.	Part No.	Description
	87	693995	Screw
	88	810716	Strain Relief
	89	802289	Screw
	90	873384	Knob
	91	852483	Ball
	92	693994	Spring
	93	697496	Orbit Shaft
	94	693956	Blower Control
	95	694925	Screw
	97	697500	Retainer Clip
	98	823793	Spring Washer
	99	872795	Washer
	105	874454	Base
	106	884289	Screw
	107	876575	Guide
	108	874010	Nut
	109	838833	Needle Bearing
	110	872799	Shaft
	113	873567	Washer
	114	697499	Retainer
	115	872796	Washer
	117	872792	Orbit Lever
	118	872767	Counterweight
	120	872802	Spring Washer
	121	872732	Crank Block
	122	886538**	Screw
	123	858792	Washer
	124	889081	Drive Roller, After S/N 034080
		876768	Drive Roller, Before S/N 034080
	125	693988	Shaft
	127	884036	Pivot Shaft, T2, T3
		693961	Pivot Shaft, T1
	128	693963	Spring
	129	876765	Recip. Shaft, After S/N 034080
		876768**	Recip. Shaft & Roller Kit Incl: Ref. 124, Before S/N 034080

Ref.	No.	Part No.	Description
	130	873386	Bearing Block
	131	693960	Seal
	132	873306	Blade Clamp
	133	874477	Blade Screw
	134	874479	Screw
	135	802388	Set Screw
	136	694003	Screw
	137	695778	Shaft
	138	695630	Snap-Ring
	139	876767	Roller
	140	873314	Support Arm
	141	695892	Spring
	142	873391	Shaft
	143	693964	Seal
	144	882256	Screw
	145	694001**	Spacer, Early T1 Units Only - CF Cover
	146	695016	Cover
	147	693988	Counterweight Guide Pin, 3 req'd.
	148	695620	Seal, T2, T3
	*	875914	Lubricant, 5 1/2 oz.
	*	875667	Lubricant, 4 lbs.
	*	876922	Capacitor, K7549 only
	*	883030	Label, Blade Installation
	*	44749	Carrying Case, Incl.:
	*	887712	Carrying Case Latch
	*		Not Shown
	**		See Service Notes

SERVICE NOTES

7549

COUNTERWEIGHT SCREWS (REF. 122):

Early units (below S/N 016264), were built with phillips head screws. Current units have T-25 Torx drive screws. The current style screws are supplied for all service requirements. Coat threads lightly with Loctite #680 prior to assembly.

RECIPROCATING SHAFT (REF. 129):

Models after S/N 034080 have an improved shaft design. This improved shaft requires a new drive roller. The new shaft and roller are packaged as a kit to service earlier machines.

DRIVE ROLLER (REF. 124) and WASHER (REF. 123):

Early models used a driver roller Ref. 124 and a washer Ref. 123. Later models use a longer drive roller that eliminates the need for the washer. This new, replacement drive roller does not require a washer. If your saw has a washer, remove the washer before installing this roller.

SPACER (REF. 145) and HANDLE SET (REF. #57) EARLY TYPE 1 UNITS

The spacer (Ref. #145) used on early Type 1 Units is no longer available, however Handle Set #694022 has been modified to eliminate this item. When it is necessary to replace either the handle set or the spacer use handle set number 694022 and discard the spacer.

FIELD - REF. 3

The T1 and T2 Field is no longer available and has been replaced by the T3 Field which includes the new one piece Brush and Holder assembly. When Servicing T1 or T2 units with the T3 Field discard the Brushes Ref. 3 and Brush Holders Ref. 3B and attach the brush lead from the Field to the Brush/Holder Assy. as shown below. Attach the brush lead from the switch in the normal manner.

